



## IN THIS EDITION

TRUMPF TruBend 1000	pg 2
TRUMPF TruLaser 1000 / TruPunch 1000	pg 3
DMG MORI Product Line	pg 4
DMG MORI Product Line	pg 5
New Supplier ALPHA LASER	pg 6
New Supplier STOPA	pg 7
MARKATOR FlyMarker mini 120/100	pg 8
FICEP VALIANT / NOZOMI	pg 9
HEXAGON Leica Absolute Tracker ATS600	pg 10
TAYLOR HOBSON Roughness Tester	pg 11
N.KO UZ 12 Ultralight	pg 12
KASTOwin A 3.3 / KASTOmicut U 2.6	pg 13
HYPERTHERM Plasma Cutter	pg 14
TRUMPF Beveller	pg 15
EFD Induction	pg 16
VICIVISION Series X	pg 17
RETECON SERVICE	pg 18
GF Machining Solutions CUT X series	pg 19
STUDER	pg 20
NitroCube Benefits	pg 21
BEDRA Wire	pg 22

How TRUMPF is making sheet-metal fabrication simpler, more productive and more sustainable !!

**NEW:** TruBend series  
1000 Basic Edition

# EuroBLECH 2022: How TRUMPF is making sheet-metal fabrication simpler, more productive and more sustainable

## TRUMPF expands portfolio of entry-level machines



TRUMPF is also continuing to expand its share of the market in simpler, more affordable machines. In 2021, the high-tech company introduced an entry-level laser-cutting machine and an entry-level laser welding machine, and this year's EuroBLECH saw the launch of an entry-level bending machine, the TruBend 1000. "By expanding our portfolio, we're tapping into a growing market for simpler machines. The machines are just as reliable, robust and durable as our high-end models, but significantly more affordable," says Mayer. These entry-level machines from TRUMPF meet the same high safety standards as its high-end solutions, and they also provide users with access to the same tried-and-tested range of TRUMPF services. Easy to program and operate, these new machines help companies to address the shortage of skilled labour. Customers who choose to purchase them can also take advantage of suitable financing packages.

The bending machines of the TruBend Series 1000 take care of all common bending tasks with reliable accuracy. They are the right choice for users wishing to enter the world of TRUMPF. Impress your customers by opting for proven TRUMPF quality.

### ■ High quality

Decades of bending experience and an array of groundbreaking innovations.

### ■ Precision

The bending machines are characterized by a high process accuracy.

### ■ The right tool

You can use either the excellent TRUMPF tool system or another one of your choice.

### ■ Long service life

Top quality throughout a long machine life – from the first bend to the last.

### ■ Best operating concept

Maximum safety and simple operation due to numerous options.

## TruLaser 1000 series

First-class TRUMPF quality and expertise with low investment and operation costs – this is what you will get with the machines from the TruLaser Series 1000. Its solid-state laser impresses with its robust design and power that will last for years. The machine also makes the cut with its easy-to-learn operation, as well as numerous intelligent functions. Due to its convenient interfaces, the machines of the TruLaser Series 1000 are also easy to automate or to connect to other machines.



- Perfect introduction, perfect addition**

Perfect economy even with low to medium utilization.

- High quality**

The machine is robust, durable and provides perfect results.

- Safe laser cutting**

Maximum safety during operation thanks to enclosed protective housing and beam guard.

- Save money, protect the environment**

Energy-efficient process cooler for laser and machine.

- Automation made easy**

Autonomous work is possible.

- Just get started**

Intuitive operation with Touchpoint control, and easy to get started thanks to integrated cutting data.

## TruPunch 1000 (S05)

The TruPunch 1000 is the perfect entry to professional punching. The compact machine excels with its high level of processing flexibility: In addition to just punching, you can also use it to form threads, extrude, and bend flanges. You can process midsize sheets completely in one tool setup without repositioning. You can even produce smaller orders and lot sizes economically, quickly and with flexibility.



- Ready for numerous applications**

The TruPunch 1000 masters all of the relevant applications of a TRUMPF punching machine.

- Simple operation**

The intuitive control enables the immediate production of simple and complex parts.

- Versatile tools**

TRUMPF offers top quality punching tools such as the MultiTool or the MultiShear slitting tool.

# GLOBAL LEADER IN AUTOMATION: 13 PRODUCT LINES AND 57 PRODUCTS

SET-UP TIME

↑  
WORKPIECE HANDLING

## TURNING



IMTR (NTX 1000)



SR (WASINO)



Robo2Go  
Turning/  
Vision



Robo2Go Max

NEW



NEW

## MILLING



WH Cell



Robo2Go  
Milling



MATRIS Light



PALLET HANDLING



AWC  
(NMV/CMX V)



PH Wheel



RPS



NEW

PH Cell 2000/  
PH Cell 300



PH 150



PH 50

NEW

## MACHINE-SPECIFIC

## UNIVERSAL (1 MACHINE)

Technology expertise, machine and automation from a single source. Future-proof your production with DMG MORI.

Harry Junger  
Managing Director  
GILDEMEISTER Drehmaschinen GmbH



GX/GX T



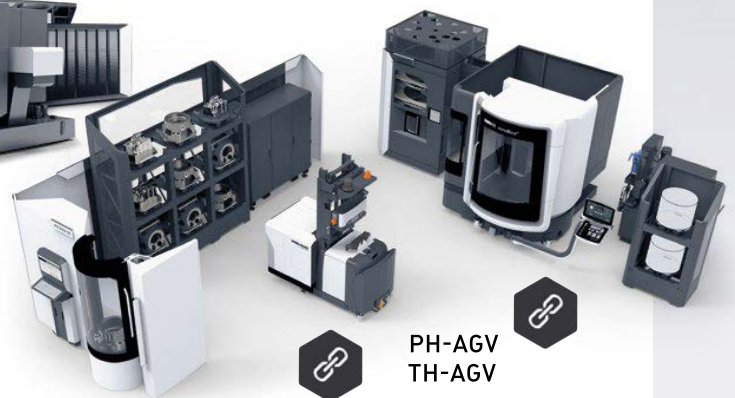
NEW



PH Cell Twin



CPP



SCALABLE ( $\geq 1$  MACHINE)

→ COMPLEXITY

## The Retecon Group Welcomes a New Supplier!!

ALPHA LASER have decided to expand their sales structure in South Africa and have approached Retecon (Pty) Ltd. The contract was recently signed at EuroBlech 2022 in Hannover, Germany.

As a pioneer in the field of mobile laser welding, ALPHA LASER GmbH offers a wide range of high-quality laser welding devices. This includes laser welding systems as well as handheld welding lasers and systems for powder deposit welding. They have also developed high-performance products for other applications, such as laser cutters and laser hardening machines. Their laser systems feature high-quality and versatile laser technology and come in a wide range of performance classes.

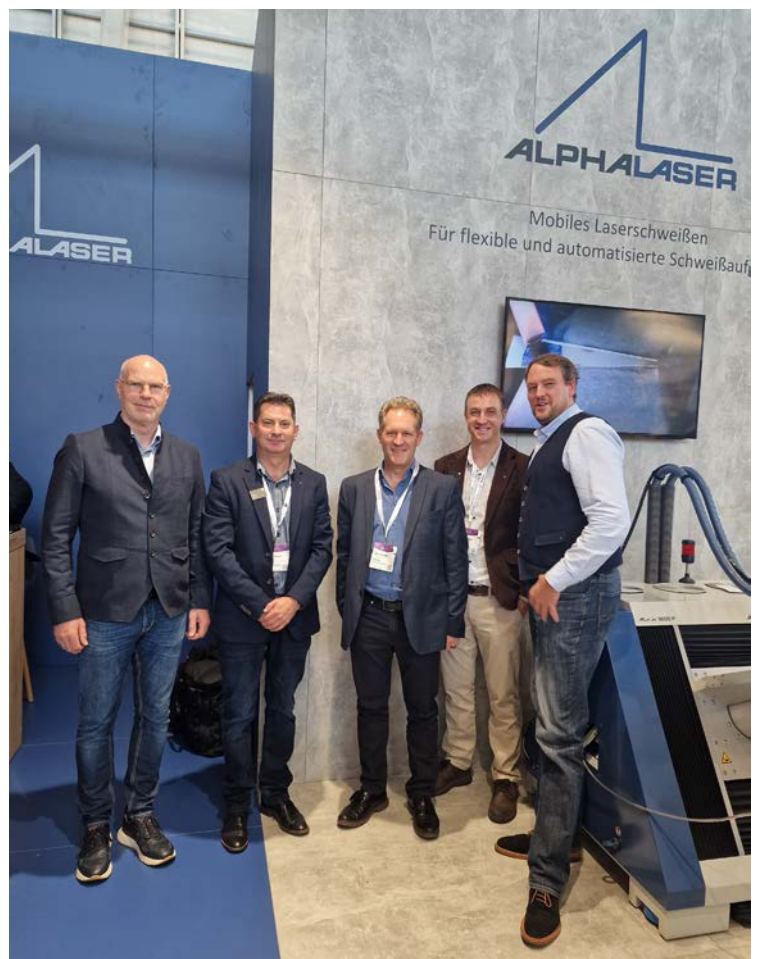
ALPHA LASER aims to provide its customers with a tool that allows you to flexibly, precisely, quickly, and cost-efficiently repair or produce workpieces. For maximum productivity in industrial production and handcraft.

We are pleased to have found another supplier within the laser welding field and look forward to a long and prosperous work relationship with them.



Photo from left to right:

Thomas Golinske – Managing Director ALPHA LASER  
Gábor Veress - Technical Sales Retecon  
Chris Kroeger - Managing Director Retecon  
Christo Jonker - Laser Support Retecon  
Thomas Miczek – Sales Manager ALPHA LASER



## The Retecon Group Welcomes a New Supplier!!

The Retecon Group would like to welcome another new supplier, STOPA.

STOPA is a leading manufacturer of automated storage systems for sheet material, long-span goods, and automated parking systems in Europe, and have decided to expand their sales structure into Southern Africa. Their product line ranges from stand-alone applications to integrated automated modules.

With 40 years of practical experience, including the installation of complex plants, and more than 2,000 systems installed worldwide, this independent company possesses unique know-how with regards to product quality and process security, process automatization, and software development.

We are very excited to have them on board and look forward to a long and prosperous work relationship with them.



**MEET STOPA:  
CUSTOM WAREHOUSE  
MANAGEMENT  
EXPERTS**

# Have a look at the...



## Benchtop Marker FlyMarker® mini 120/100 STATION

### BENEFITS AT A GLANCE

- Attractive price-performance ratio
- High quality guide system for highest stability
- Switchable LED lighting of the marking field
- Pollution-protected electronics
- Drag chain guided electric cables
- Laser pointer for simulating the marking process
- Input via USB keyboard
- Capacitive touchscreen (optional)



Logo



Data Matrix Code



Line



# FORWARD

## INNOVATIVE SOLUTIONS

### Drilling, Plasma Cutting, Scribing and Milling in One Comprehensive Production Cell

- Drilling of typical bolt holes in 25% of the time required for thermal production of holes.
- Drill holes in all three surfaces simultaneously versus one surface at a time with thermal production.
- Milling of weld preps to eliminate the clean-up generated from thermal cutting.
- Mill two rat holes simultaneously flush with the flanges to eliminate manual grinding if they were thermally produced.
- Scribe all four surfaces simultaneously versus one side at a time when plasma generated.



## VALIANT + NOZOMI

FICEP has totally integrated into one CNC system the capabilities of all the typical required fabrication routines. Compromises are eliminated as the most efficient fabrication processes are performed.



For further Information contact Mike or Bradley C on 011 976 8600 or email [machines@retecon.co.za](mailto:machines@retecon.co.za)

# The first direct scanning tracker

## Leica Absolute Tracker ATS600

The first ever direct scanning laser tracker bridges the gap between point-by-point measurement and advanced laser scanning, on a scale previously only matched by terrestrial laser scanners. The Leica Absolute Tracker ATS600 delivers large-scale direct measurement capabilities at three times the accuracy of leading terrestrial scanners while folding the entire measurement process within an established metrology workflow – results are provided immediately on-site with no need for post-processing.

Based on established technology used by high-definition surveying tools, the Enhanced Wave Form Digitiser of the ATS600 combines time-of-flight and phase-shift measurement technology to deliver fast measurement over long distances with no need for a target at the point of measurement. For the first time, the accuracy of this technology has been refined to metrological levels, allowing for non-contact measurement with a range noise of within 80 microns ( $1\sigma$ ) – significantly more accurate than previous WFD-based measurement systems.

### Large-scale power

The range of the ATS600 is fundamentally different to any comparable metrology system. Direct scanning with metrology-grade accuracy to within 300 microns is guaranteed at distances of up to 60 metres from the tracker.

### Simple operation

Measurement is an easy one-user process where targets are easily identified and results are delivered and processed efficiently. Enhanced functionalities further improve accuracy and productivity, from uniform grid scanning and high-resolution zoom to panorama imaging and Line and Ring Scan profiles.

### Automatic control

The ATS600 was designed with automation in mind. With minimal user intervention required, it can be set up to perform many repetitive measurements independently and without station relocations.

### Metrology workflows

Direct scanning is completely integrated within a metrology-oriented workflow, with all measurement data collected at a rate of up to 1000 Hertz and quickly delivered to the metrology software.

### Fast measurement

Fully configurable data point density allows users to tailor the measurement process rate and accuracy level to their application – from a quick check at 10 seconds-per-square-metre to a high-accuracy scan at 135 seconds-per-square-metre.

### Selective grid

The ATS600 works on a principle of selective scanning, where the user defines the area to be measured (through the Overview Camera or nominal data such as CAD) along with the measurement point density required. Combined with 3D orientation data, the result is a uniform grid of points accurately representing the entire measurement surface.



# Handheld portable surface roughness testers!

## Durable roughness testers for shop floor, industrial & inspection room applications.

Working closely with manufacturers across a wide range of industries including precision bearings, automotive and aerospace engineering, Taylor Hobson have focused on the key attributes that are most important for quality control in today's precision industries

The Surtronic® S-100 Series of instruments offer a versatile solution for all your roughness requirements with a variety of systems and application specific accessories along with fixtures that can be tailored to your specific need.



## Any surface, any height

The inclusion of a 50 mm stylus lift with right-angle attachment and more than 70 mm stylus reach means that even the most challenging surfaces can be measured without the need for expensive riser blocks, stands or fixtures.

The anti-slip V-feet also mean the system can be used on flat or curved surfaces. The stylus can even measure upside down!

The pick-up holder is mounted on a slide for vertical adjustment and can also be rotated to different measuring positions, including right-angled measurement.



## An excellent investment

- Improve throughput
- Reduce part scrappage
- Monitor tool wear
- Ensure traceability

## Fast and reliable...

Simply press the measurement button and in a few seconds a full set of traceable measurement results including a detailed profile graph will be displayed.

### 1 Lift/lower

Supplied as standard providing 50 mm height adjustment, right angle measurement and 70 mm reach into bores.

### 2 Measure

Tactile measurement button, great when device is being used overhead or inside pipes. InstantOn technology enables measurement to be taken in less than 1 second from standby and fully charged can remain in standby for more than 5000 hours.

# UZ 12 Ultralight



Incredibly  
quiet operation



**3** BEVELERS  
IN ONE



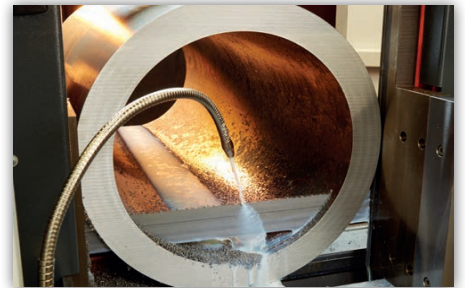
Art. Nr. - following page





## KASTOwin A 3.3 Increase your productivity

- Customised to the specific application using a modular system design
- Quick motion using servo drive and ball screw spindle for the material feed and the linear guided saw frame
- Automatic band guide arm adjustment
- Quick and easy programming via colour touch screen
- SmartControl to ensure high bandsaw blade lifetimes



## KASTOmicut U 2.6

Semi-automatic band sawing machine of very sturdy construction, with infinitely cutting speed, for solutions of all kinds of cutting tasks, 90 ° and mitre cutting (-45°/+60°) of tubes, structural and solid material in work-shops. The infinitely variable hydraulic saw feed and the hydraulic material clamping ensure a semi-automatic, sensitive and precise cut for longer blade life.



## Powermax85 SYNC plasma cutter

The Powermax85 SYNC™ is a next-generation professional grade air plasma cutter that dramatically simplifies system operation for cutting and gouging up to 25 mm (1"). Features automated system process set-up via advanced RFID-enabled SmartSYNC™ torches and a revolutionary single-piece cartridge consumable that provides trackable utilization data. The Powermax85 SYNC maximizes productivity through reductions in downtime, optimized cut quality performance and streamlined consumable inventory management.

### Benefits

#### Easy to use

- Cartridges are easy to identify by process with clear laser marking and color coding to eliminate part mix-ups.
- RFID-enabled SmartSYNC™ torches and cartridges automatically set the correct amperage and operating mode, eliminating setup errors.
- End-of-life consumable detection eliminates the uncertainty of knowing when to change the cartridge.
- Less operator fatigue when using hand torches with our new flexible lead. The lead has the same robustness of our previous lead jacket material and will also be used on robotic torches.

#### Minimize operation costs

- Simplified system operation minimizes the time and costs spent on training and troubleshooting.
- Reductions to downtime during consumable change-outs and elimination of costs associated with premature disposal of consumable parts.
- Cartridge usage data provides valuable insights for improving cutting operations and consumable inventory management.

#### Maximize performance

- Tackle a wide range of jobs with easily interchangeable torch styles and application specific cartridges.
- Optimized cartridge consumable design provides up to twice the life for handheld cutting and improved quality over life in mechanized setups.
- Time-saving hand torch controls allow the operator to adjust the amperage on the fly, change cartridges and applications without returning to the power supply.



## Power Tools

### Beveller TruTool TKF 1500 / with 2 speed

Beveller with  
improved feature

01

#### No refinishing work

15 mm weld edge preparation in one step

02

#### Individual

The bevel height and bevel angle can be quickly adjusted

03

#### The choice is yours

The right cutting tool for any application

06

#### Powerful and efficient

2600 W motor with optimized gear head

05

#### Working safely

With soft grip handle and integrated hand guard

04

#### Zero sparks

High processing reliability and no emissions



## Mobile, flexible and easy to use

The Minac's mobility and ease of use make it a versatile system—an all-in-one-solution, ideal for jobs as diverse as brazing, curing, shrink-fitting, hardening, straightening, etc.



## Versatile systems for various heating jobs

Minacs are versatile induction systems for the heating of practically any electrically conductive material. They are ideal for jobs as diverse as brazing, shrink-fitting, hardening, curing, straightening, and many more. They can be fitted with various coils and coil fixtures, single or twin output, flexible cables, closed or separate cooling systems, specially designed heating cables, etc. The Minac is equipped to fit your needs.





The measuring machine for manufacturers of both small turned parts and larger components

# Discover a single inspection solution for applications from dental implantology and surgical tools to precision mechanical parts

## Series X MTL X360



### High resolution and generous field of view

Very high-resolution images combined with a wide measuring field. Designed to measure the intricate parts of medical components, as well as larger parts and medium-sized shafts.

VICIVISION X360, the only machine on the market that combines a measuring range of 300x60 mm with a resolution comparable to a 400 / 500X projector.

### Objective measurements

Operators can check the entire external profile of the part in a few seconds and produce an objective measurement report with no human intervention.

Ideal for manufacturers of prototypes in industries such as the medical sector, where traceability of data and measurements is essential - the machine saves a profile photo for verification of the dimensions even after shipment to the customer.

### Attention to design

Large illuminated access areas make loading and unloading even the smallest and most difficult parts quick and easy. The stainless-steel casing protects the optics against dust and facilitates regular cleaning. The low rotation resistance of the upper tailstock means it can be used even with very small parts.



# SPECIAL SERVICES OFFERED

Retecon Service has provided skilled, motivated and dedicated machine tool technicians for the South African manufacturing and engineering industries since 1978.

Most of our staff of technicians countrywide have received training overseas at our principals' manufacturing plants to ensure that their skills match the exacting requirements of our principals and our customers. To complement this, we also have a comprehensive in-house and local training programme, ensuring we equip our technicians with the skills and resources to provide top-quality service.

Retecon Service has four Service Departments allowing each department to specialise in the different machine tools and technologies.

Retecon Service provides a full range of services for the machine tool industry including: Installations and commissioning; Maintenance and repairs; The supply and fitting of spare parts and consumables; Calibration of measuring equipment, geometry and kinematic checks on CNC machines; and spindle refurbishments. With its wide range of expertise and experience, Retecon Service is also well-equipped to offer project implementations.

In addition, our applications technicians can provide a range of applications services and software support, as well as operator and programme training.

After-hours support service is available to enable customers to receive technical assistance before and after normal working hours and over weekends.

Retecon Service also offers service agreements for various machine tools, providing customers with planned, regular maintenance services with the added benefit of discounted labour rates for the service period.

We are proud of our Safety Policy, graded "Green" by Sasol's stringent criteria.

**We are currently offering FANUC Programming Courses on Basic Turning or Basic Milling Programming as well as various others.**

As a member of the Retecon Group, we also enjoy ISO 9001:2015 certification.



CUT X series

# Extreme accuracy, simple and fast

The latest CUT X series condenses more than 100 years of combined expertise in the best-ever wire EDM machine. With an elegant new design and X-technologies enabling ultrahigh accuracy, this series delivers true value.

**Fast**

The new CUT X elevates the standards of productivity. Its well-known Intelligent Power Generator with Direct Power Supply (IPG-DPS) and the unique twin-wire technology make the impossible feasible at unbeatable speed. And with its reduced cycle times, the machine is ready for an unmanned automated operation, making your investment easily digestible.

**Extreme accuracy**

This solution's optimized mechanics, revolutionary head design using Additive Manufacturing, and a new thermal management system are the basis for unprecedented accuracy and surface quality.

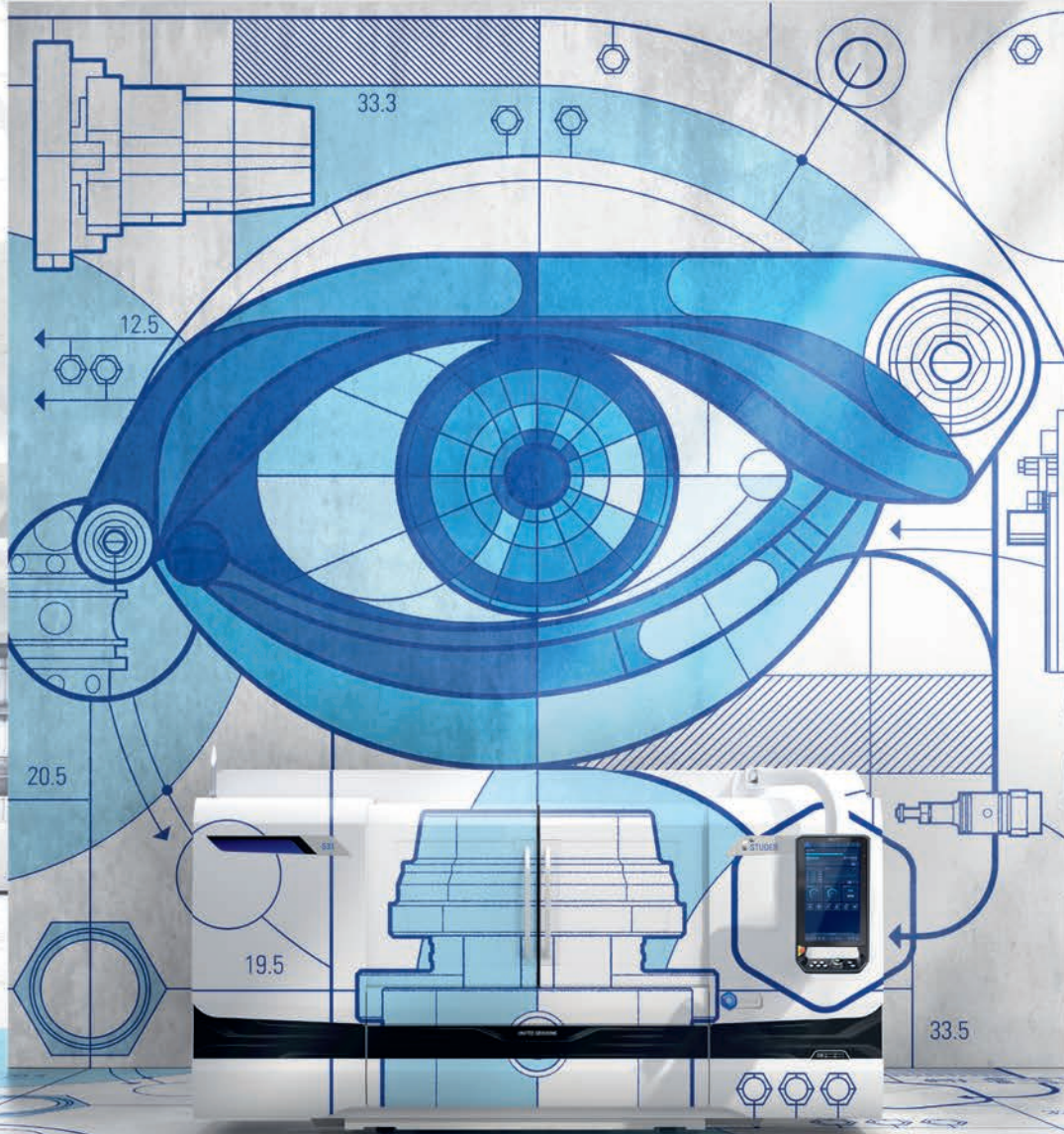


CUSTOMER ORIENTED REVOLUTION

# C.O.R.E. IS NOT ONLY AN EYE-CATCHER



C.O.R.E.®

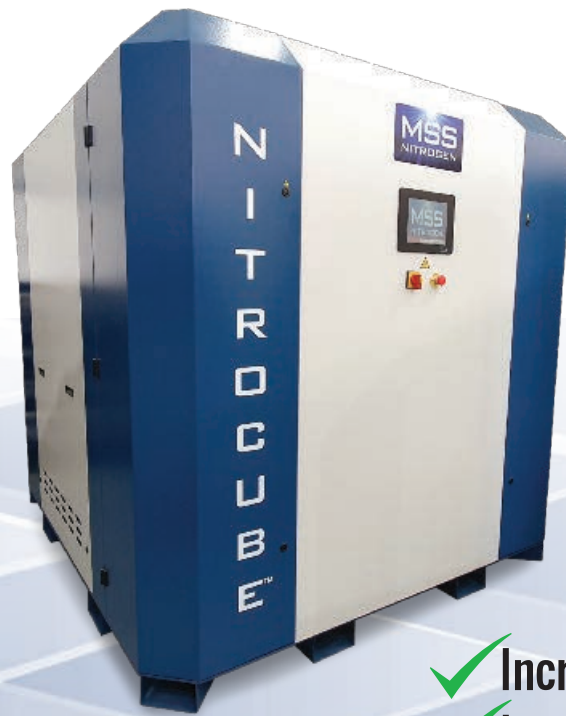


Join us on our Customer Oriented REvolution. Find out more about C.O.R.E. and the role it plays in the digital future of your production.

➔ [studer.com/digitalization](https://studer.com/digitalization)



# NitroCube is the **MOST SIMPLE** and **ECONOMICAL SOLUTION** for on-site nitrogen generation for laser cutting applications



- ✓ Increased productivity
- ✓ Improved product quality
- ✓ Reduced costs
- ✓ Maximum profitability

## NitroCube THE BENEFITS

- No machine downtime for cylinder changes or liquid top up
- Laser cut carbon steel faster, cheaper and with an "oxide free edge"
- Self financing, using money otherwise spent on ready made nitrogen
- Guaranteed low cost, high purity nitrogen
- Continuous 24/7 supply
- No running out of gas unexpectedly
- No gas waste, liquid "boil off" or gas bottles returned partially full
- No rental, delivery or environmental charges
- No restrictive gas contracts

# RETECONREPORT

An information service to our clients



2022 | 3

Machine Tools | Cutting Tools | Accessories and Measuring Equipment

## bedra

intelligent wires

### BRASS WIRE

BRASS WIRE 0.25mm - SOFT | ECONOMICAL

- Berco Cut 372-392 Nmm 4kg soft
- Berco Cut Special 500 Nmm 16kg soft
- Berco Cut Pro 500 Nmm 5kg soft
- Berco Cut Pro 500 Nmm 8kg soft

BRASS WIRE 0.25mm - HARD 900/Nmm<sup>2</sup>

- Berco cut Special 900 Nmm 5kg hard
- Berco Cut Special 900 Nmm 16kg hard
- Berco Cut Pro 900 Nmm 5kg hard
- Berco Cut Pro 900 Nmm 8kg hard

### COATED WIRE

GAPSTAR WIRE - THE NEW EDM HIGH PERFORMANCE WIRE

- Gapstar.9 - COATED WIRE 900 N/mm 0.25mm 5kg
- Gapstar.9 - COATED WIRE 900 N/mm 0.25mm 8kg

- New Bedra Technology (TRIMPAC)
- Suitable for all EDM wire cutting machines.

TOPAS WIRE - HARD | HIGH TENSILE | FAST | ACCURATE

- Topas Plus H - ZINC COATED 800 Nmm 5kg hard
- Topas Plus H - ZINC COATED 800 Nmm 8kg hard
- Topas Plus H - ZINC COATED 800 Nmm 16kg hard
- Topas Plus H - ZINC COATED 800 Nmm 25kg hard

COATED WIRE (CuZn) - HIGH PERFORMANCE

- Bronco Cut 520 N/mm<sup>2</sup> 4kg soft
- Bronco Cut 520 N/mm<sup>2</sup> 8kg soft
- Bronco Cut 520 N/mm<sup>2</sup> 16kg soft
- Bronco Cut 520 N/mm<sup>2</sup> 25kg soft

**Great Value FOR  
Money!!**

**EDM WIRE**

### CONTACT DETAILS ▼

#### Head Office & Showroom

P.O. Box 1472,  
Kempton Park, 1620  
100 Plane Road,  
Spartan Industrial Township,  
Kempton Park

**Tel:** 011 976 8600

**Telefax:** 011 394 2471

**E-mail:** machines@retecon.co.za

#### Port Elizabeth

P.O. Box 414  
Port Elizabeth, 6000  
2A Haupt Street,  
Sidwell, Port Elizabeth, 6001

**Tel:** 041 453 2720

**Telefax:** 041 453 6678

**E-mail:** machines.pe@retecon.co.za

#### Durban

P.O. Box 1186,  
Pinetown, 3600  
Unit 32, Ivy Park,  
3 Ivy Road,  
Pinetown

**Tel:** 031 701 8149

**Telefax:** 031 701 0313

**E-mail:** machines.dbn@retecon.co.za

#### Cape Town

P.O. Box 1167,  
Milnerton, 7435  
Unit 8 + 9, Peter Park,  
Montague Drive,  
Montague Gardens

**Tel:** 021 555 2270/1

**Telefax:** 021 555 2272

**E-mail:** machines.ct@retecon.co.za

[www.retecon.co.za](http://www.retecon.co.za)

To advertise please contact us:  
machines@retecon.co.za

Design by Louise Visser  
Production by Retecon (Pty) Ltd  
Copyright Retecon (Pty) Ltd 2015



FOLLOW US ON SOCIAL MEDIA