



TRUMPF



IN THIS EDITION

| | |
|---------------------------------------|-------|
| TRUMPF | pg 1 |
| TRUMPF TruLaser 3080 Fiber | pg 2 |
| TRUMPF XTREME Solutions | pg 3 |
| DMG MORI Gear Cutting Solutions | pg 4 |
| DMG MORI Open House Bielefeld | pg 5 |
| MARKATOR FlyMarker mini 85/45 Plus | pg 6 |
| MARKATOR FlyMarker mini 85/45 Plus | pg 7 |
| The Launch Of the New Retecon Website | pg 8 |
| HEXAGON Leica Absolute Tracker AT500 | pg 9 |
| TAYLOR HOBSON Vertical Hinge Pins | pg 10 |
| N.KO B 15 Electra | pg 11 |
| KASTO Cutting Machines | pg 12 |
| HYPER THERM Plasma Cutter | pg 13 |
| TRUMPF Nibblers | pg 14 |
| EFD Induction | pg 15 |
| VICIVISION PRIMA | pg 16 |
| RETECON SERVICE | pg 17 |
| Advantages of 3D Printing | pg 18 |
| Advantages of 3D Printing | pg 19 |
| GROB Cold Forming Machines | pg 20 |
| BEDRA Wire | pg 21 |

With perfect edges
through
thick & thin





TruLaser 3080



2D LASER CUTTING MACHINES

TruLaser 3080 Fiber

8m x 2.5m cutting area // 4Kw - 12Kw laser



Source: TRUMPF

TRUMPF cuts XXL sheets with less waste

New TruLaser 3080 fiber laser-cutting machine fabricates up to eight meter long parts // Machine can run in multi-shift operation without automation // New "nano joint" technology boosts process reliability and reduces material waste.

Ditzingen, April 6, 2022 – High-tech company TRUMPF showcased a new laser-cutting machine that specializes in oversized sheets at its INTECH in-house trade show, which was held from May 17 to 20, 2022. The TruLaser 3080 fiber fabricates parts in sheets up to eight meters long and is particularly adept at cutting large and heavy parts weighing up to 7,850 kilograms, such as facade components and trailers for trucks or cranes. The TruLaser 3080 fiber can also be used for small and medium-sized parts, so operators can easily use it to its full capacity and make optimal use of their production capacity. "There are only a few companies in the sheet-metal fabrication market that can cut oversized parts precisely to size. We pride ourselves on being a solution provider, and this machine really does give our customers a competitive edge and the ability to process even more jobs in less time," says TRUMPF product manager Patrick Schüle. The machine can handle sheet thicknesses up to 50 millimeters and processes a variety of materials ranging from aluminum to mild steel.

Benefits of the TruLaser 3080 Fiber:

- Multi-shift operation without automation
- Less material, more productivity
- Maximum flexibility
- Nano joints: reliable tabbing without wasting material

XTREME Solutions

Double bends longer: TruBend 8000 Standalone /Tandem

Do you bend a lot of long or short heavy parts? Then this heavy-duty solution with up to 2,000 tons of press force is just what you need. A single TruBend 8000 can bend lengths of up to 12 meters, and in tandem operation even 16 meters. Thanks to the HD upper tool clamp, you can also bend extremely thick and short sheets at

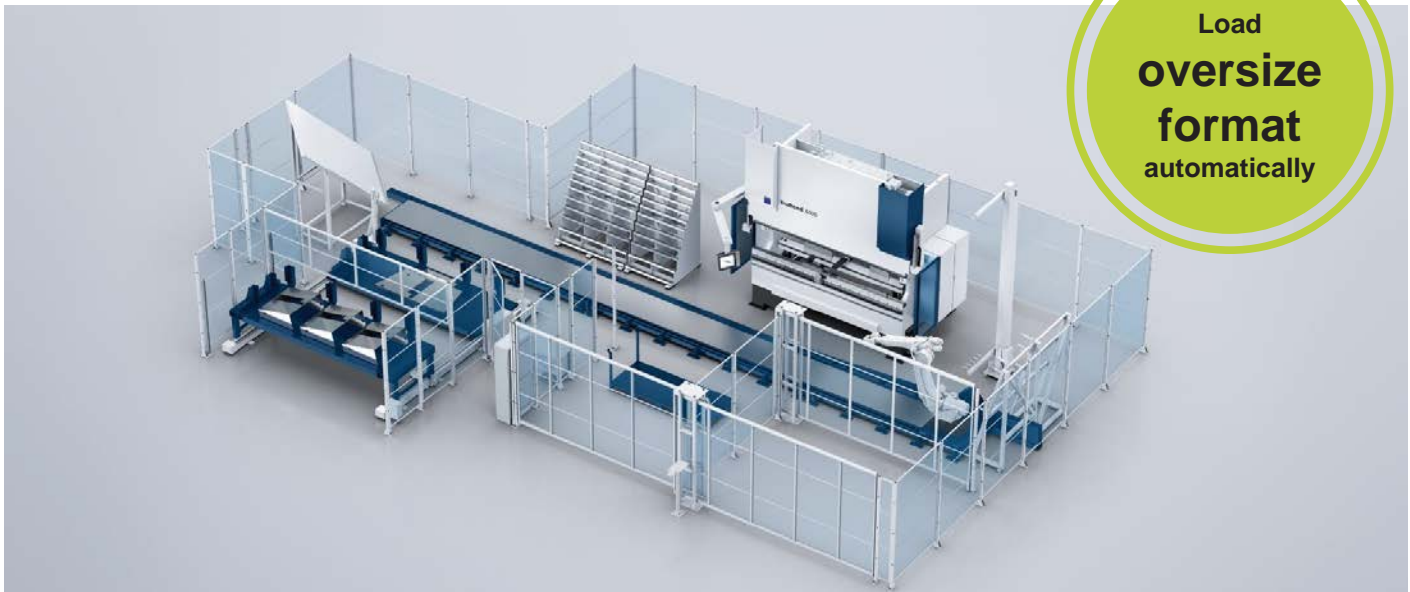
precise angles. A height-adjustable heavy-duty bending aid with a load capacity of 300 kilograms ensures ergonomic working. Adapt the bending talent to your needs with the help of numerous special options and customizing.



Bringing automation to new spheres : Starmatik

A strategically strong combination: Combine the maximum degree of freedom of the TruBend 8000 with flexible automation from Starmatik. Bend oversize sheets up to 6 meters long or 400 kilograms in weight. With its six axes, the robot speeds up your production process.

It masters automatic tool changes as well as gripper changes and handles your materials in the way that benefits your production the most. Want to integrate additional manufacturing processes into your automation? Customize your set-up with our specialists.



Gear Cutting – 60 percent faster programming with DMG MORI gear cutting solutions

Based on exclusive technology cycles and tools from DMQP partner HORN, DMG MORI offers unique gear solutions on standard machines.

- **gearSKIVING:** Hob peeling of internal and external gears up to MODULE 11
- **gearMILL:** Gear cutting with standard tools \geq MODULE 3
- **gearBROACHING:** Gear shaping of internal and external gears up to MODULE 4
- Customized tools from DMQP partner HORN



In the course of increasing technology integration, DMG MORI has developed numerous solutions that enable flexible complete production of sophisticated components. One impressive example is gear milling on turn-mill and mill-turn centers. With gearSKIVING, gearMILL and gearBROACHING, DMG MORI offers innovative technology cycles that enable efficient machining of high-precision gears - without the need for special gear cutting machines. In this way, users retain absolute flexibility in manufacturing. DMQP partner HORN is also on board for the development of customer-specific gear cutting tools.

60 percent faster thanks to dialog-guided input of gear parameters

Gears are an essential component in drive technology. The demands placed on these often safety-relevant and also very complex components are correspondingly high and varied. In the past, special machines had to be used for these parts. With five axes as standard, technology integration at the highest level and supported by specialized DMG MORI technology cycles, the expensive special path is now a thing of the past.

Holistic manufacturing solutions for maximum efficiency

At the Open House Bielefeld, DMG MORI impresses with automated manufacturing solutions and extensive technology integration for efficient, flexible and future-proof production.

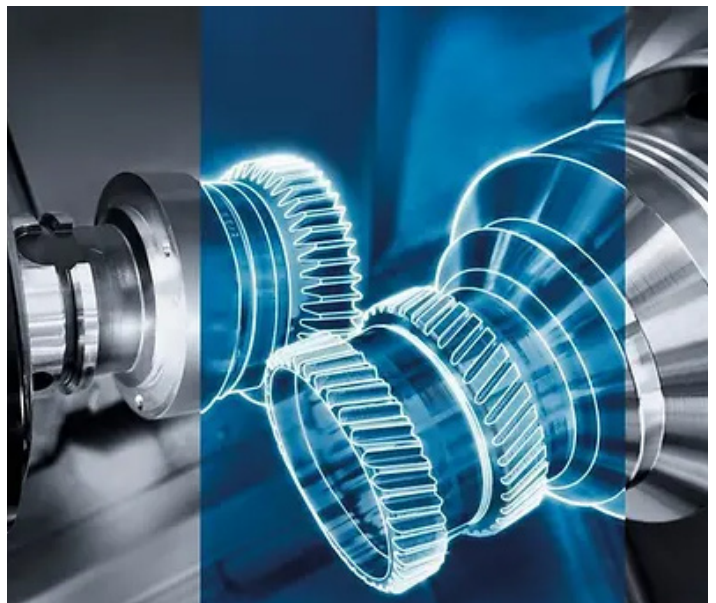
Technology Excellence: Turn & Mill competence for optimal manufacturing solutions



DMG MORI has always stood for a holistic portfolio in turning and milling. In particular, the tradition-rich plant in Bielefeld combines this know-how in its Turn & Mill Competence Center. With the high-performance turn & mill centers of the CTX TC series, DMG MORI enables 6-sided complete machining of workpieces up to 3,000 mm in length. Equipped with B-axis and optional lower turret, the CTX TC models are perfectly suited for the flexible production of more complex parts in small to medium batch sizes. In addition, the compact NTX series complements DMG MORI's turn & mill portfolio. For example, the NTX 1000 has become a permanent fixture in the highly productive production of orthopedic implants. Also featuring the B-axis factor is the CLX 450 TC. The entry-level model in the turn & mill segment has redefined universal turning.

Technology Integration: Milling, turning, gear cutting and grinding in one setup

For DMG MORI, automated and efficient production also includes the integration of different CNC technologies in one workspace. The CTX TC and NTX turn & mill series as well as the DMU FD mill & turn centers already made a start many years ago. DMG MORI has consistently continued this development with exclusive technology cycles for gear cutting in the same clamping: gearSKIVING, gearMILL, gearBROACHING and gearHOBBING offer an attractive alternative to costly gear cutting machines. The technology cycles support the calculation of complex NC programs directly at the control with up to 60 percent time savings compared to traditional programming. For the perfect tool solution in gear cutting, DMG MORI cooperates with its DMQP partner Paul Horn.



FlyMarker® mini 85/45 plus

Benefits at a glance

- Integrated controller (All-In-One)
- Extra strong magnet for deep markings (optional)
- Integrated user friendly keyboard mat with numeric keys
- Attractive price-performance ratio
- Switchable LED lighting of the marking field
- Pollution-protected electronics and interfaces
- Drag chain guided electric cables
- Laser pointer for simulating the marking process
- One or two-handed operation



Removable handle

Also available
120 x 45 mm

Marking area (optional)

Fast and smooth navigation

- Latest processor generation.
- Clear and intuitive software.
- Numerous language versions available by default.
- Practical preview function for error prevention.
- Helpful tagging variables such as time, date or auto numbering are already included.

18V Lithium-Ion-Battery (4,0 Ah)

100 % mobil marking

- Ergonomic device design for energy-saving, non-tiring work.
- Heavy and immovable components are marked on site.
- Self-sufficient work without power and compressed air cables.
- Reduction of occupational accidents.

Mark permanently and forgery-proof

- Visible marking even after subsequent surface treatment.
- Nearly all materials can be marked – from plastics up to hardened steel (63HRC).
- Adjustable impact strength for different materials.

Break-resistant and glass-fiber reinforced plastic

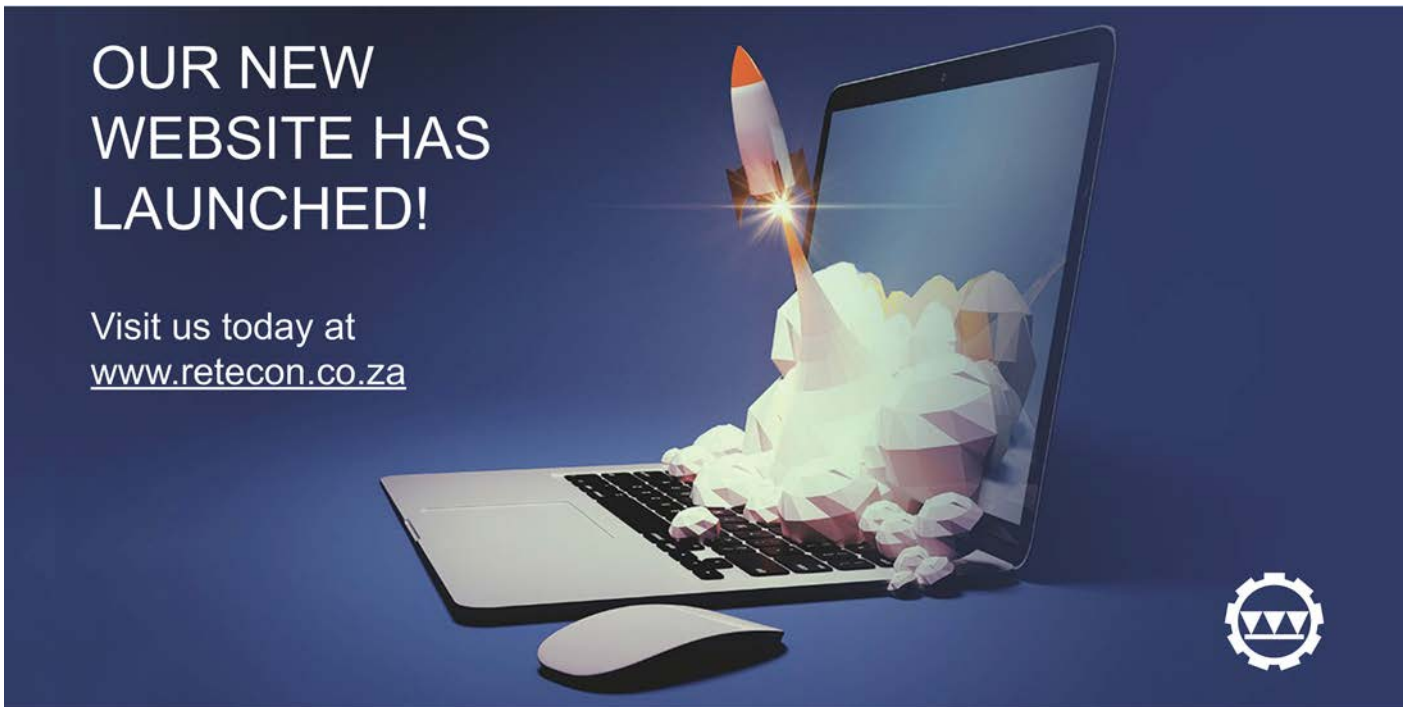
Core technology

- High marking quality thanks to stable, durable mechanics.
- High rigidity of the mechanics due to robust basic carrier with integrated positioning plate.
- High quality guide system for highest stability.



Column frame for small parts (optional)
(FlyMarker® mini 120/45)

We Are Pleased to Announce The Launch Of Our New Website



After months of hard work and dedication, we are excited to officially announce the launch of our newly designed website, aiming to expand our role as the leading supplier of machine tools, accessories and measuring equipment to the metal working industry in Southern Africa. Everyone at Retecon (Pty) Ltd is proud to introduce this fresh look to you.

Our goal with this new Retecon website is to provide our visitors an easier way to learn about our products, services, and support, and create a user-friendly browsing experience for our trusted and valued customers, business partners and potential clients, thanks to the simple design that is easy to navigate.

Amongst other features the site contains integrated social media buttons for Facebook, LinkedIn and YouTube in order to achieve better communication with our clients.

We are proud of the teamwork and input from all involved, while creating this new website design.

Website link: www.retecon.co.za

Stay tuned for more!

Ready to measure anywhere

Leica Absolute Tracker AT500

The first true all-in-one Hexagon laser tracker measurement solution, the Leica Absolute Tracker AT500 benefits from a fully battery-powered, integrated-controller design that makes it the most portable and easy to setup member of the Absolute Tracker range. Operational simplicity plays a key role in driving the enhanced productivity proposition of the AT500, from its easy ultra-long-range reflector measurement capabilities to the entry-level 6DoF probing functionality delivered by B-Probe^{plus}. With the usability and robust design that are the defining features of the AT500, absolutely anyone can measure absolutely anything, absolutely anywhere.

Measurement anywhere

The AT500 boasts IP54-rated protection from the elements, as well as an extended working temperature range of -15 to +50°C, allowing for measurement from the mountaintop to the foundry.

Integrated features

The batteries that power the AT500 have been built into the tracker head, making this a system that's ideal for setup and operation beyond the bounds of traditional inspection locations.

Extended range

The full reflector measurement range of the AT500 extends across a volume 320 metres in diameter, making it the ideal solution for inspection of large structures such as antennas or ships.

Next-generation probing

The battery-powered B-Probe^{plus} brings entry-level 6DoF handheld probing to the 3D tracker segment. The probe is easier to handle than the previous generation and boasts a widened acceptance angle and increased range.

Live 6DoF information

The digital read-out of the B-Probe^{plus} puts direct measurement feedback in the users hands. This simplifies and speeds up probing operations, and is particularly useful in supporting drilling applications when combined with a punch tool accessory.

Productivity made easy

One-button operation combined with WiFi access point connectivity and integrated batteries makes the AT500 the easiest tracker to use. And it's not limited to upright configuration — it can be used in any orientation, including upside down.



Surtronic® S-100 Series

Helicopter Vertical Hinge Pins

Harry Jones, Applications Engineer

Customer requirements

Maintenance of Helicopters is crucial, the customer required a user-friendly solution for measuring components that were susceptible to wear.

The integrity of the hinge pin is of a particularly high concern. This part provides the main support for the rotor blades; therefore, failure of this part can be catastrophic.

Background - Why does wear depth matter?

The depth of the indentation, at the point taking the majority of the load gives an indication of the wear that has taken place on the pins. A large amount of load is administered over a small surface area, increasing risk of failure.

The customer has identified this risk and taken action by implementing a procedure, whereby after a fixed number of hours in use, the pins are removed and inspected to give an indication of the life span remaining in the component. If the depth of the indentation relative to the normal surface exceeds a set value, the part will be replaced.

The Solution - Surtronic S-100 & TalyProfile

The Surtronic® S-100 provides the perfect solution for the customer, not only due to its simple and user-friendly operation but also due to the fact that it could be used in tandem with TalyProfile software.

The user can take a measurement and automatically analyse using a predefined analysis template. Using contour analysis within TalyProfile, the maximum valley depth from the normal surface could be easily quantified to give the customer the information they required for the application.



Helicopter rotor mechanism



Surtronic® S-100



Military helicopter

B 15 Electra



High Performance
Motor and Gearbox



REVOLVING ERGONOMIC HANDLE





KASTOradial

For Individual Cuts, Straight and Mitre Cutting

- Semi-automatic or manual circular saw
- Pneumatic or manual material clamping with counter clamping vice for burr-free cuts
- Coolant system
- Material support roller
- Infinitely adjustable saw feed with height limitation or manual feed



KASTOmicut

Manual swivelling frame bandsaw – The Allrounder

- Hydraulically controlled saw feed
- Rotary table as material support
- Manual material clamping
- Infinitely adjustable cutting speed
- Mitre angle on both sides from +60° to -45°



KASTOpractical

Easiest Operating in Daily Use

- Two cutting speeds
- Coolant system
- Horizontal clamping vice
- Automatic machine shut-off after cut
- Infinitely adjustable mitre angle +60° to -45°
- Infinitely adjustable guide arm positioning
- Cutting feed, adjustable by precision throttle

Powermax85 SYNC plasma cutter

The Powermax85 SYNC™ is a next-generation professional grade air plasma cutter that dramatically simplifies system operation for cutting and gouging up to 25 mm (1"). Features automated system process set-up via advanced RFID-enabled SmartSYNC™ torches and a revolutionary single-piece cartridge consumable that provides trackable utilization data. The Powermax85 SYNC maximizes productivity through reductions in downtime, optimized cut quality performance and streamlined consumable inventory management.

Benefits

Easy to use

- Cartridges are easy to identify by process with clear laser marking and color coding to eliminate part mix-ups.
- RFID-enabled SmartSYNC™ torches and cartridges automatically set the correct amperage and operating mode, eliminating setup errors.
- End-of-life consumable detection eliminates the uncertainty of knowing when to change the cartridge.
- Less operator fatigue when using hand torches with our new flexible lead. The lead has the same robustness of our previous lead jacket material and will also be used on robotic torches.

Minimize operation costs

- Simplified system operation minimizes the time and costs spent on training and troubleshooting.
- Reductions to downtime during consumable change-outs and elimination of costs associated with premature disposal of consumable parts.
- Cartridge usage data provides valuable insights for improving cutting operations and consumable inventory management.

Maximize performance

- Tackle a wide range of jobs with easily interchangeable torch styles and application specific cartridges.
- Optimized cartridge consumable design provides up to twice the life for handheld cutting and improved quality over life in mechanized setups.
- Time-saving hand torch controls allow the operator to adjust the amperage on the fly, change cartridges and applications without returning to the power supply.



Cutting Nibblers (power tools)



TruTool N 200



Lightweight and unbeatable performance on curves

The TruTool N 200 can be used to cut flat and corrugated sheet. Even interior cutouts and notches are easy to process as the machine can be rotated on the spot. There is no need for tools to change the cutting direction. You can upgrade and expand the TruTool N 200 with additional tools according to your needs. This means, for example, even cutting trapezoid sheets is not problem. The machine offers an impressive top cutting speed of 5.5 feet per minute.

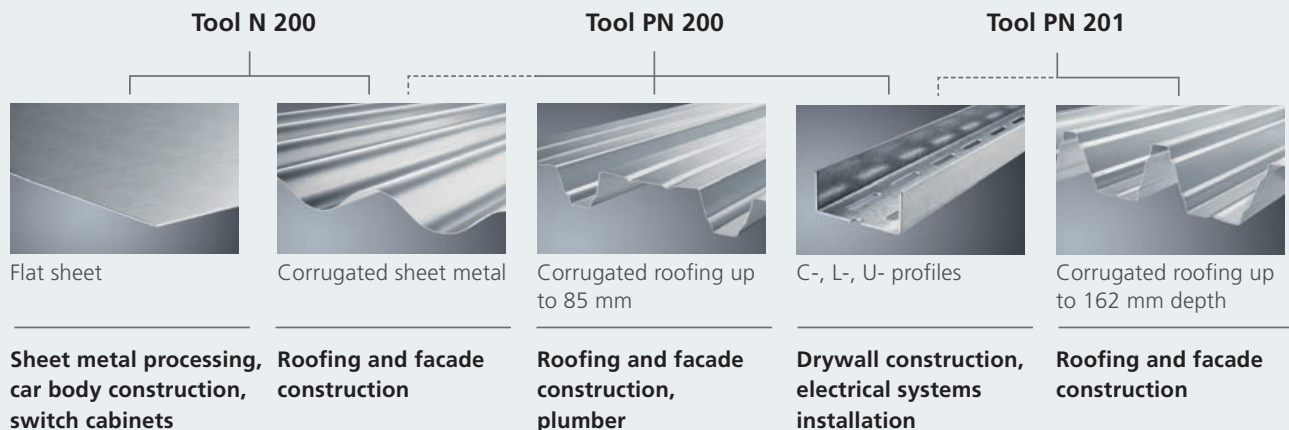
TruTool N 500



Powerful in four directions

The TruTool N 500 offers unique versatility. Since you can cut in four directions, even backwards, you can dismantle tanks and containers, and process coils and workpieces with bends of up to 90°. The machine is also well-suited to cutting high-tensile materials. The optimal weight/performance ratio of 8.8 lbs. against a sheet thickness of 0.2 in. is particularly impressive.

The different tools can be used on all three machines





DIGITAL TO THE CORE

EFD Induction has always been at the forefront of technological development and with the new fully digital control system, we set you up for the future.

Future-proof

The fully digital control system provides a solid foundation to build on. Easy-to-install software upgrades ensure that your induction equipment will always have the latest state-of-the-art technology.

Enhanced reliability

Your induction equipment will have extended life through our unique, advanced machine audits and troubleshooting. Enhanced diagnostics will protect you against unexpected costs.

Increased productivity

Better use of your machine data will increase your productivity. You will have unmatched control and efficiency, reduced maintenance requirements and shorter service response time.



PREPARED FOR INDUSTRY 4.0 THE INDUSTRIAL INTERNET OF THINGS

With easy updates to new features, your equipment is prepared for developments within:

- Advanced analytics and predictive maintenance
- Interconnectivity
- Condition monitoring and alarming
- Automation and real-time data
- Machine learning
- Remote service and augmented reality

PRIMA

WHY CHOOSING PRIMA?

TO ALLOW YOU TO WORK MORE COMFORTABLY

- Loading point close to the operator: lowers the effort on the shoulders.
- No door to open or close: use both hands to load.
- Fixed part and moving optics: always precise even with heavy parts.

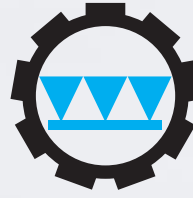
TO CREATE YOU SPARE TIME

- Learning time reduced by 30% with Vivian programming assistant.
- New personnel to train? Learn whenever and wherever you want with the E-learning platform.
- Complex programs? We are here to help you with the online support.

TO PROVIDE YOU WITH A COMPLETE SOLUTION

- See the real image, without filters, as intuitive as on a profile projector.
- Program from your office with the included off-line software.
- From the simplest measures to threads and form errors: all in one solution.





SPECIAL SERVICES OFFERED

Retecon Service has provided skilled, motivated and dedicated machine tool technicians for the South African manufacturing and engineering industries since 1978.

Most of our staff of technicians countrywide have received training overseas at our principals' manufacturing plants to ensure that their skills match the exacting requirements of our principals and our customers. To complement this, we also have a comprehensive in-house and local training programme, ensuring we equip our technicians with the skills and resources to provide top-quality service.

Retecon Service has four Service Departments allowing each department to specialise in the different machine tools and technologies.

Retecon Service provides a full range of services for the machine tool industry including: Installations and commissioning; Maintenance and repairs; The supply and fitting of spare parts and consumables; Calibration of measuring equipment, geometry and kinematic checks on CNC machines; and spindle refurbishments. With its wide range of expertise and experience, Retecon Service is also well-equipped to offer project implementations.

In addition, our applications technicians can provide a range of applications services and software support, as well as operator and programme training.

After-hours support service is available to enable customers to receive technical assistance before and after normal working hours and over weekends.

Retecon Service also offers service agreements for various machine tools, providing customers with planned, regular maintenance services with the added benefit of discounted labour rates for the service period.

We are proud of our Safety Policy, graded "Green" by Sasol's stringent criteria.

We are currently offering FANUC Programming Courses on Basic Turning or Basic Milling Programming until the end of 2022 as well as various others.

As a member of the Retecon Group, we also enjoy ISO 9001:2015 certification.



The dental 3D metal printer 2CREATE is the perfect solution for dental printing of CoCr and titanium.

3D printing of dental components has many advantages compared to classic milling processes.



High efficiency

The digitization of conventional workflows (CAD design and CAM manufacturing) results in high efficiency and design freedom.

Sustainability and cost savings

Lower material consumption results in significantly lower costs compared to other manufacturing technologies such as milling. This saves resources and money.

Optimum surface quality

The excellent polishing properties are comparable to those of castings. There is the option of high gloss polishing for minimal rework in the lab.

What materials are available for 3D metal dental printing?

The required mechanical properties of dental metal 3D materials play an important role in material selection. The dental restoration material must meet the appropriate requirements in terms of strength, hardness, plasticity and elasticity in order to be used safely and reliably in the field of dental restoration.

Mechanical properties of CoCr and titanium in comparison:

Titanium 6AL4V and 6AL4V ELI (Gr. 5 and Gr. 23), alloys made of 6% Aluminum and 4% Vanadium, are the most common types of titanium used in medicine. Because of its harmonizing factor with the human body, these titanium alloys are popularly used in medical procedures, as well as in body piercings.

Titanium is characterized by high biological compatibility and has therefore become the material of choice for implants. The mechanical properties of CoCr (especially in terms of stiffness, yield strength) are advantageous for the manufacture of dental components.

Mechanical properties:

Titanium has the higher yield strength compared to CoCr, so retention loss is less likely than CoCr alloys, especially for clasps. However, the modulus of elasticity is much lower than CoCr alloys, so the stiffness of a titanium alloy framework is lower than when using a CoCr alloy. This must be taken into account, especially in the design of frameworks.

Corrosion:

When dental prostheses are used in the oral cavity for a long period of time, ion dissolution is inevitable. Therefore, dental metal materials must have a certain corrosion resistance to minimize the precipitation of metal ions and reduce safety and health risks. In terms of corrosion resistance, both materials are optimal for use in dental applications. The corrosion resistance level of both alloys almost reaches the level of precious metals.

The Ti6Al7Nb alloy may be beneficial for patients with allergies or intolerances to one or more components of the CoCr alloy. The dental 3d metal printer 2CREATE is the perfect solution for dental printing of CoCr and titanium.

A 2oneLab Partnership

Dental businesses are committed to providing the highest quality solutions and collaborating with trusted partners for high-quality scanning equipment, CAD/CAM design software, and manufacturing systems. They utilize milling machines and additive manufacturing processes such as 3D printing or laser marking when needed! When such businesses heard about 2CREATE, their interest was immediately piqued, and setup a meeting with the team from 2oneLab to learn more. This cost-effective metal additive manufacturing system features accessible technology that dentists can use in their practices without any investment!



Why the 2CREATE 3D Metal Printer Is the Optimal Solution

The 2CREATE quickly became a fundamental part of the solutions provided to clients, and it was immediately apparent that it met a critical need. This small footprint, with easy doorways, makes this system one-of-a-kind in class. One of the most popular metal AM has been highly successful because it produces reliability. Moreover, quality parts in market-specific materials, which can be intimidating to adopt for clinics, excels at supporting their customers through knowledge transfer as well as training them on how best to use this machine type properly so that its performance will not fail under pressure from doctors' needs during busy workdays or emergencies.



Dental Workflow

The Digital Dental Market has been undergoing a dramatic shift in recent years. The introduction of digital technology and its adoption by clinicians is one reason why this change has happened so suddenly. Still, it also serves patients better with streamlined workflows that cater directly to their needs.

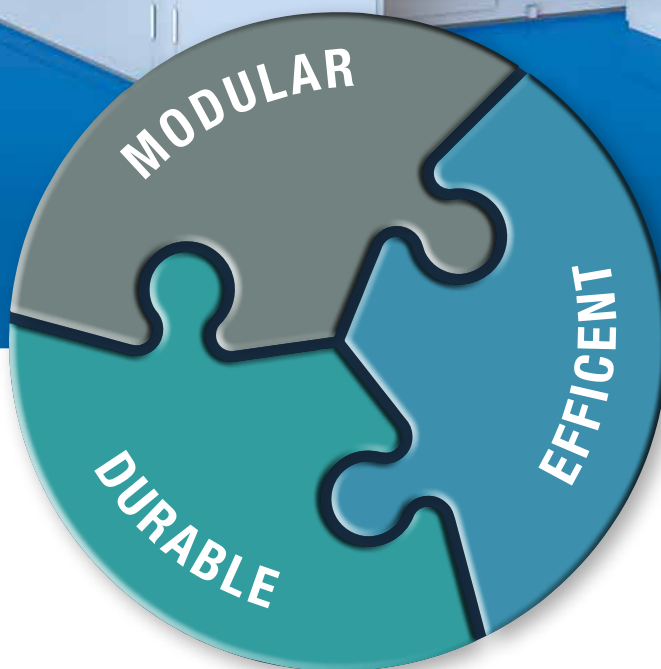




— SWITZERLAND —



COLD FORMING MACHINES



ERNST GROB AG have launched a new machine series, the A-Series cold forming machines. A more flexible, modular and cheaper machine solution for the cold forming of solid and sheet metal components.

RETECONREPORT

An information service to our clients



2022 | 2

Machine Tools | Cutting Tools | Accessories and Measuring Equipment

bedra

intelligent wires

BRASS WIRE

BRASS WIRE 0.25mm - SOFT | ECONOMICAL

- Berco Cut 372-392 Nmm 4kg soft
- Berco Cut Special 500 Nmm 16kg soft
- Berco Cut Pro 500 Nmm 5kg soft
- Berco Cut Pro 500 Nmm 8kg soft

BRASS WIRE 0.25mm - HARD 900/Nmm²

- Berco cut Special 900 Nmm 5kg hard
- Berco Cut Special 900 Nmm 16kg hard
- Berco Cut Pro 900 Nmm 5kg hard
- Berco Cut Pro 900 Nmm 8kg hard

COATED WIRE

GAPSTAR WIRE - THE NEW EDM HIGH PERFORMANCE WIRE

- Gapstar.9 - COATED WIRE 900 N/mm 0.25mm 5kg
- Gapstar.9 - COATED WIRE 900 N/mm 0.25mm 8kg

- New Bedra Technology (TRIMPAC)
- Suitable for all EDM wire cutting machines.

TOPAS WIRE - HARD | HIGH TENSILE | FAST | ACCURATE

- Topas Plus H - ZINC COATED 800 Nmm 5kg hard
- Topas Plus H - ZINC COATED 800 Nmm 8kg hard
- Topas Plus H - ZINC COATED 800 Nmm 16kg hard
- Topas Plus H - ZINC COATED 800 Nmm 25kg hard

COATED WIRE (CuZn) - HIGH PERFORMANCE

- Bronco Cut 520 N/mm² 4kg soft
- Bronco Cut 520 N/mm² 8kg soft
- Bronco Cut 520 N/mm² 16kg soft
- Bronco Cut 520 N/mm² 25kg soft

**Great Value FOR
Money!!**

EDM WIRE

CONTACT DETAILS ▼

Head Office & Showroom

P.O. Box 1472,
Kempton Park, 1620
100 Plane Road,
Spartan Industrial Township,
Kempton Park

Tel: 011 976 8600

Telefax: 011 394 2471

E-mail: machines@retecon.co.za

Port Elizabeth

P.O. Box 414
Port Elizabeth, 6000
2A Haupt Street,
Sidwell, Port Elizabeth, 6001

Tel: 041 453 2720

Telefax: 041 453 6678

E-mail: machines.pe@retecon.co.za

Durban

P.O. Box 1186,
Pinetown, 3600
Unit 32, Ivy Park,
3 Ivy Road,
Pinetown

Tel: 031 701 8149

Telefax: 031 701 0313

E-mail: machines.dbn@retecon.co.za

Cape Town

P.O. Box 1167,
Milnerton, 7435
Unit 8 + 9, Peter Park,
Montague Drive,
Montague Gardens

Tel: 021 555 2270/1

Telefax: 021 555 2272

E-mail: machines.ct@retecon.co.za

www.retecon.co.za

To advertise please contact us:
machines@retecon.co.za

Design by Louise Visser
Production by Retecon (Pty) Ltd
Copyright Retecon (Pty) Ltd 2015



FOLLOW US ON SOCIAL MEDIA